



CP-EX Pro series



Best value entry level desktop printer



Best Label-saving Protocol!



Before



Last generation label printer needs tedious, costly and time consuming setting procedures.

After

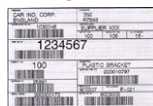


Using smarter new generation desktop printer to save time and money.

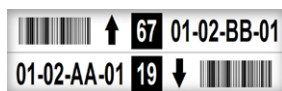
Application



Logistics



Warehouse



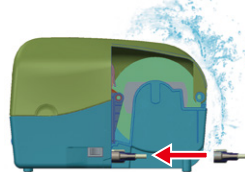
Manufacturing



Service Bureau



Feature-rich to make daily work simple and easy



Shell Suit design

Interface roof feature can avoid interface from water spill damage and keep machine close to wall, reduce operating space.



Easy to load media

Large loading space to help media and ribbon installation very easily.



Durable life

Inherited the turtle spirit, integrated structure makes CP-EX Pro series solid and robust.



Performance enhance

Expanded SDRAM and Flash ROM can store more fonts, forms, graphics.

Print Specifications	CP-2140EX Pro	CP-3140EX Pro
Printing Method	Direct Thermal & Thermal Transfer	
Printing Resolution	203 dpi (8 dots/mm)	300 dpi (12 dots/mm)
Printing Speed	Max. 6 ips	Max. 4 ips
Printing Length	Max. 100"(2540 mm)	Max. 50"(1270 mm)
Printing Width	Max. 4.25"(108 mm)	Max. 4.16"(105.7 mm)
Memory	128MB SDRAM, 128MB Flash ROM	
CPU Type	32 bit RISC microprocessor	

Consumables Specifications	
Sensors	Reflective sensor x 1 (movable) & Transmissive sensor x 1 (Center fixed)
Media Type	Roll-feed, die-cut, continuous, fan-fold, black mark, tags, ticket in thermal paper or plain paper
Media	Max. width: 4.65" (118mm). Min. width: 0.8" (20mm). Thickness: 0.0024"~0.008" (0.06mm~0.2mm) Max. roll capacity (OD): 5"(127 mm) Core size 1"(25.4mm) Max. roll capacity (OD): 4.5"(114.3 mm) Core size 0.5"(12.7mm) Max. roll capacity (OD): 4.7"(120 mm) Core size 1.5"(38.1mm)
Ribbon	Ribbon width: 1"~4.33"(25.4mm~110mm), Ribbon length: Max. 300m. Core size ID: 1"(25.4mm), optional: 0.5"(12.7mm), Core width: 2.6"(67mm) Wax, Wax/Resin, Resin (Ribbon wound ink-side out or ink-side in: auto-detect)

Fonts & Symbolologies	
Fonts	Internal character sets standard 5 alpha-numeric fonts from 0.049"H ~ 0.23" H (1.25mm ~ 6.0mm) Internal fonts are expandable up to 24x24 4 direction 0 ~ 270 rotation Soft fonts are downloadable Ability to print any Windows True Type font easily. Support scalable font GB 18030 Standard (Chinese coded character set) support
1D Barcodes	PPLA: Code 39, UPC-A, UPC-E, Code 128 subset A/B/C, EAN-13, EAN-8, HBIC, Codabar, Plessey, UPC2, UPC5, Code 93, Postnet, UCC/EAN-128, UCC/EAN-128 K-MART, UCC/EAN-128 Random weight, Telepen, FIM, Interleaved 2 of 5 (Standard/with modulo 10 checksum / with human readable check digit/ with modulo 10 checksum & shipping bearer bars), and GS1 Data bar (RSS) PPLB: Code 39, UPC-A, UPC-E, Matrix 2 of 5, UPC-Interleaved 2 of 5, Code 39 with check sum digit, Code 93, EAN-13, EAN-8 (Standard, 2/5digit add-on), Codabar, Postnet, Code128 subset A/B/C, Code 128 UCC (shipping container code), Code 128 auto, UCC/EAN code 128 (GS1-128), Interleave 2 of 5, Interleaved 2 of 5 with check sum, Interleaved 2 of 5 with human readable check digit, German Postcode, Matrix 2 of 5, UPC Interleaved 2 of 5, EAN-13 2/5 digit add-on, UPCA 2/5 digit add-on, UPCE 2/5 digit add-on, and GS1 Data bar (RSS) PPLZ: Code39, UPC-A, UPC-E, Postnet, Code128 subset A/B/C, Interleave 2 of 5, Interleaved 2 of 5 with check sum, Interleaved 2 of 5 with human readable check digit, Code 93, Code 39 with check sum digit, MSI, EAN-8, Codabar, Code 11, EAN-13, Plessey, GS1 Data bar (RSS), Industrial 2 of 5, Standard 2 of 5, and Logmars
2D Barcodes	PPLA: MaxiCode, PDF417, Data Matrix (ECC 200 only), QR code, and Composite Codes PPLB: MaxiCode, PDF417, Data Matrix (ECC 200 only), QR code, and Composite Codes PPLZ: QR code, PDF417, Data Matrix (ECC 200 only), and MaxiCode Composite Codes
Graphics	PPLA: PCX, BMP, IMG, HEX and GDI format files PPLB: PCX, BMP, Binary Raster, and GDI PPLZ: GRF, Hex and GDI
Emulation	PPLA, PPLB, PPLZ

Interface Characteristics and Integration	
Operation Interface	LED Indicator x 2, Button(Feed) x 1
Communication Interface	Ethernet, USB device, RS-232, USB host
Drivers	Windows Driver for Windows Vista/Win7/Win8/Win10, LINUX Driver, macOS Driver, Raspberry Pi Driver
Software	BarTender, Printer Tool, Font Utility
Application	iLabelPrint+
Database Link	Argobar Pro support ODBC Database Connection: Excel, CSV, MS Access, MS SQL, Oracle MySQL, dBASE (*.dbf)

Operating & Environment Characteristics	
Power Source	Universal Switching Power supply. AC input voltage: 100~240V, 50~60Hz. DC Output: 24V, 2.4A
Operation Environment	Operation Temperature: 40°F~100°F (4°C~38°C), 10% ~ 90% non-condensing, Storage Temperature: -4°F~122°F (-20°C~50°C)
Agency Listing	CE, FCC, cULus, CCC, RoHS, BIS, BSMI, KC

Physical Characteristics	
Printer Dimensions	W 226mm x H 188mm x D 276mm
Printer Weight	4.6 lbs (2.1 kg)

*Argox reserves the right to enhance and modify the specification without prior notice.

Please check Argox sales representative for most updated specifications.

Optional Items



Guillotine Cutter



Rotary Cutter



Peeler



External media stand

Argox Information Co., Ltd.

8F., No. 28, Baogao Rd., Xindian Dist., New Taipei City 231029, Taiwan (R.O.C.)

Tel: +886-2-8912-1121 Fax: +886-2-8912-1124 <https://www.argoxt.com> <https://www.youtube.com/user/argoxtmkt>

Copyright © 2023. Argox Information Co., Ltd. All Rights Reserved.



ARGOX Certified Repair Centers
Consult your local Argox business partners for location and contacts.

